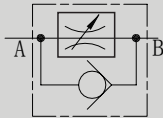


2MRB SERIES FLOW CONTROL VALVES

SYMBOL



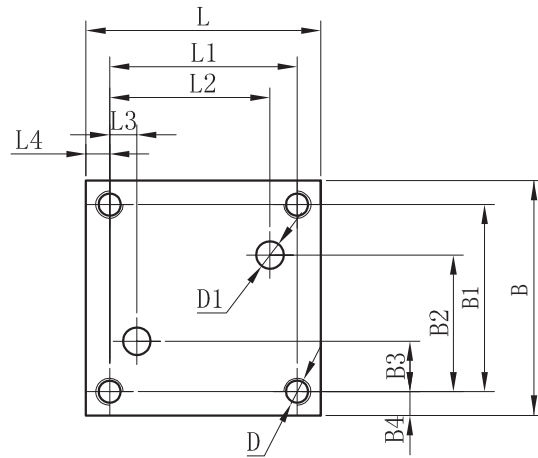


2MRB series flow control valves are restrictive style flow regulators, without affected by pressure and temperature.

Technical data

Size	5							10				16		
Max.flow rate(A – B)(L/min)	0.2	0.6	1.2	3	6	10	15	10	16	25	50	60	100	160
ΔP Value(B–A)(Mpa)	0.05	0.05	0.06	0.09	0.18	0.36	0.67	0.2	0.25	0.35	0.6	0.28	0.43	0.73
Operating pressure(Mpa)	21							31.5				31.5		
Min.pressure loss	0.3–0.5							0.3–0.7				0.5–1.2		
Filtering to prolong service life(μ m)	25 (Q<5L/min);10(Q<0.5L/min)													
Weight(KGS)	1.38							3.4				7.57		
Valve body (Material) Surface treatment	casting phosphating surface													
Oil cleanliness	NAS1638 class 9 and ISO4406 class 20/18/15													

► 2MRB Subplate Installation dimensions



Model	B	B1	B2	B3	B4	L	L1	L2	L3	L4	D	D1
2MRB5	60	48	35	13	6	60	48	41	7	6	4-M5/12	2-Φ6
2MRB10	101.5	82.5	71.6	30.1	9.5	95	76	55.1	9.6	8.5	4-M8/13	2-Φ12
2MRB16	123.5	101.5	90.5	15	11	123.5	101.5	75	20.5	11	4-M10/25	2-Φ20

