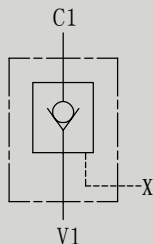


HPLK PILOT OPERATED CHECK VALVES

SYMBOL

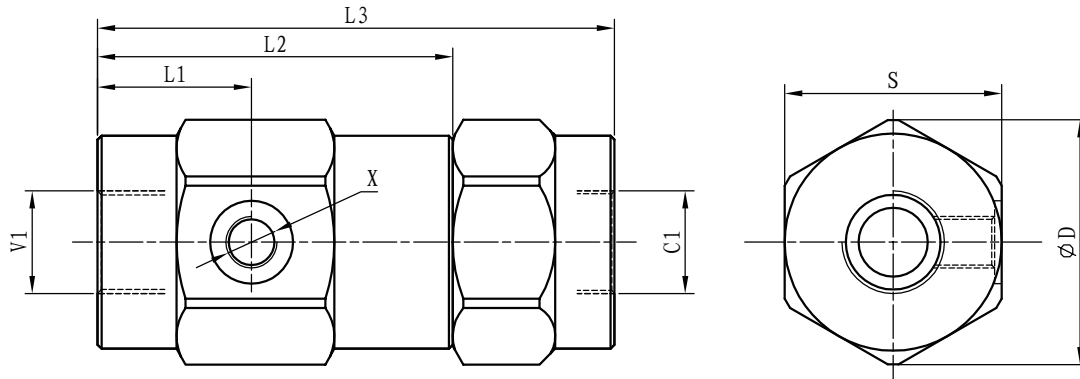


Flow is allowed to pass from V1 to C1 when pressure at V1 rises above the spring bias pressure and the poppet is pushed from its seat. The valve is normally closed (checked) from C1 to V1; when sufficient pilot pressure is present at X port, the pilot piston acts to push the poppet from its seat and flow is allowed from C1 to V1. Precision machining and hardening processes allow virtually leak-free performance in the checked condition.

▶ Technical

Model	HPLK-1/4-20	HPLK-3/8-35	HPLK-1/2-50	HPLK-3/4-100	HPLK-1-150
Max Flow rate(L/min)	20	35	50	100	150
Max operating pressure(MPa)	31.5				
Pilot ratio	4.7:1	4.4:1	4.6:1	3.8:1	3.2:1
Valve body (Material) Surface treatment	(Steel body) Surface clear zinc plating				
Oil cleanliness	NAS1638 class 9 and ISO4406 class 20/18/15				

▶ HPLK Installation Dimensions



Model	L1	L2	L3	V1 C1	X	S	φ D
HPLK-1/4-20	29	78	101.5	G1/4"	G1/4"	40	44
HPLK-3/8-35	31.5	82	106	G3/8"	G1/4"	41	45
HPLK-1/2-50	36	85	120	G1/2"	G1/4"	42	47
HPLK-3/4-100	39	90	131	G3/4"	G1/4"	55	62

▶ HPLK-1-150 Installation Dimensions

