

DESCRIPTION

A solenoid operated, 3-way, 2-position, spool-type cartridge valve.

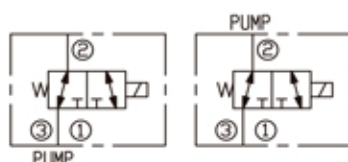
OPERATION

When de-energized, the valve allows flow from ③ to ②, while blocking flow at ①. When energized, the cartridge's spool shifts to allow flow from ① to ②, while blocking flow at ③.

Operation of Manual Override Option

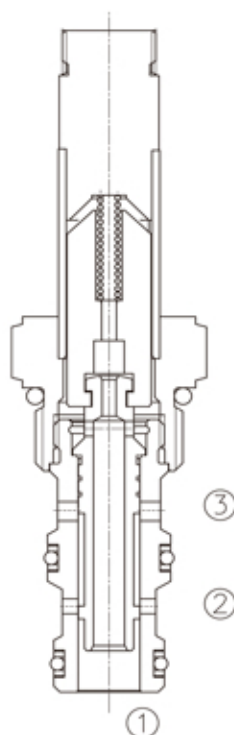
To override, push button in, twist counterclockwise 180° and release. In this position, valve will remain detented in the shifted condition. To return to normal operation, push button in, twist clockwise 180° and release. Override will be detented in this position.

SYMBOL

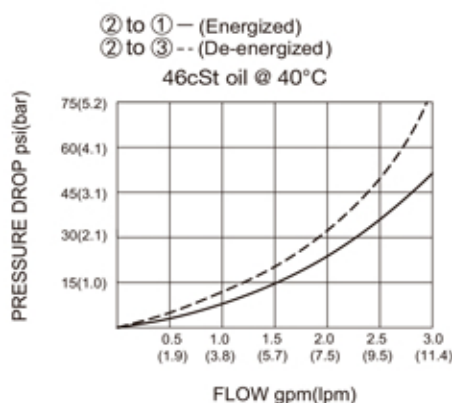


SPECIFICATIONS

(Operating Pressure):	207bar
(Flow):	See PERFORMANCE CHARACTERISTIC graph.
(Internal Leakage):	(per land)82cc/min. max. at 207bar
(Temperature):	-40°F to +212°F(-40°C to +100°C)
(Coil Duty Rating):	Continuous from 85% to 115% of nominal voltage
(Filtration):	See page N-1
(Fluids):	Mineral-based fluids with viscosities of 7.4 to 420 cSt.
(Cavity):	08-3, See page M-1
(Body Material):	6061-T6 aluminum alloy rated to 207bar, Steel & Ductile iron rated to 350bar



PRESSURE DROP VS.FLOW



LSV2 - 08 - 3A - * - * - * - * - *

1 LSV2= Solenoid Valve

2 Size
08=08

3 Flow Path
3A=

4 Blank= None
M= Manual Override

5 Voltage

 1=12 VDC
 2=24 VDC
 3=110 VAC
 4=220 VAC
 5=10 VDC
 7=48 VDC
 8=24 VAC

6 Coil Connection

 D= Double Lead
 S= Single Lead
 H= Hirschmann
 ER= Deutsch Connector(Water-proof Coil)
 IP69K
 E= Single Stud
 B= Double Spade

7 Body Porting

 Blank=None
 4T=SAE 4
 6T=SAE 6
 2G=G 1/4
 3G=G 3/8

Other Porting Is Available

INSTALLATION DIMENSIONS

Coil Must Be Installed With Letter Up

Unit=Millimeters

