

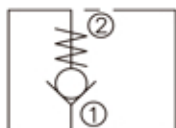
DESCRIPTION

A cartridge-style poppet-type check valve

OPERATION

Pressure at ① overcomes the spring-bias poppet and allows free flow from ① to ② .
Flow in the opposite direction, from ② to ① ,is blocked by the poppet.

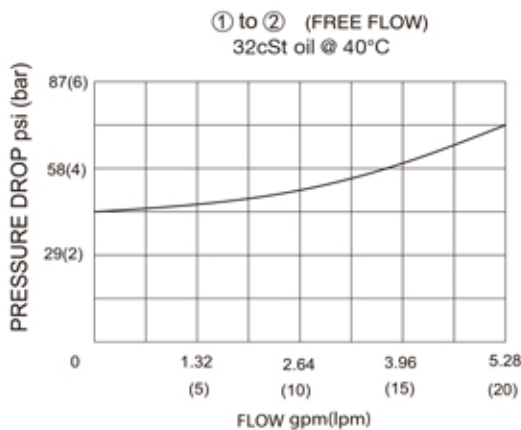
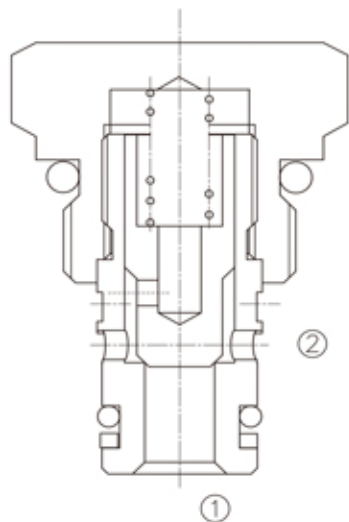
SYMBOL



SPECIFICATIONS

(Operating Pressure):	250bar
(Flow):	See PRESSURE DROP VS.FLOW graph.
(Internal Leakage):	2 drops/min . max. at 250bar
(Crack Pressures):	0.3=0.3bar 0.7=0.7bar 2.1=2.1bar 3.0=3.0bar 4.1=4.1bar 6.9=6.9bar
(Temperature):	-40°F to +250°F(-40°C to +120°C)
(Filtration):	See page N-1
(Fluids):	Mineral-based fluids with viscosities of 7.4 to 420 cSt.
(Cavity):	08-2,See page M-1
(Body Material):	6061-T6 aluminum alloy rated to 207bar, Steel & Ductile iron rated to 350bar

PRESSURE DROP VS.FLOW



LCV - 08 - P - * * - * *

1 2 3 4 5

1 LCV= Check Valve

2 Size
08=08

3 P= Poppet

4 Cracking Pressure
0.3=0.3bar
0.7=0.7bar
2.1=2.1bar
3.0=3.0bar
4.1=4.1bar
6.9=6.9bar

5 Body Porting
Blank = None
4T=SAE4
6T=SAE6
2G=G 1/4
3G=G 3/8

Other Porting is Available

D

INSTALLATION DIMENSIONS

Unit=Millimeters

