

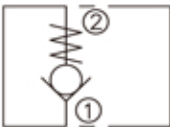
DESCRIPTION

A cartridge-style poppet-type check valve

OPERATION

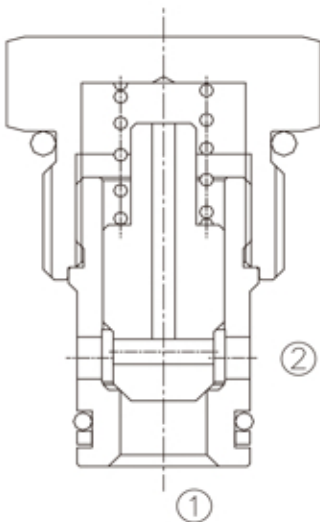
Pressure at ① overcomes the spring-bias poppet and allows free flow from ① to ② .
Flow in the opposite direction, from ② to ① ,is blocked by the poppet.

SYMBOL

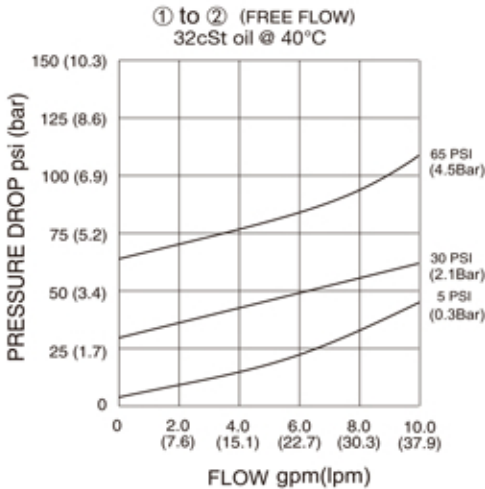


SPECIFICATIONS

(Operating Pressure):	350bar
(Flow):	See PRESSURE DROP VS.FLOW graph.
(Internal Leakage):	2 drops/min max. at 350bar
(Crack Pressures):	0.3=0.3bar 0.7=0.7bar 2.1=2.1bar 4.5=4.5bar 6.9=6.9bar
(Temperature):	-40°F to +250°F(-40°C to +120°C)
(Filtration):	See page N-1
(Fluids):	Mineral-based fluids with viscosities of 7.4 to 420 cSt.
(Cavity):	10-2,See page M-2
(Body Material):	Steel & Ductile iron rated to 350bar



PRESSURE DROP VS.FLOW



LCV - 10 - P - * * - * *

1

2

3

4

5

1 LCV= Check Valve

2 Size
 10=10

3 P= Poppet

4 Cracking Pressure
 0.3=0.3bar
 0.7=0.7bar
 2.1=2.1bar
 4.5=4.5bar
 6.9=6.9bar

5 Body Porting

Blank= None

6T=SAE6

8T=SAE8

3G=G 3/8

4G=G 1/2

Other Porting is Available

D

INSTALLATION DIMENSIONS

Unit=Millimeters

