

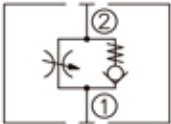
DESCRIPTION

A cartridge-style adjustable flow control valve with reverse flow check

OPERATION

The valve varies flow restriction by adjusting needle in or out. Flow is metered from ② to ① . Free reverse flow is from ① to ②

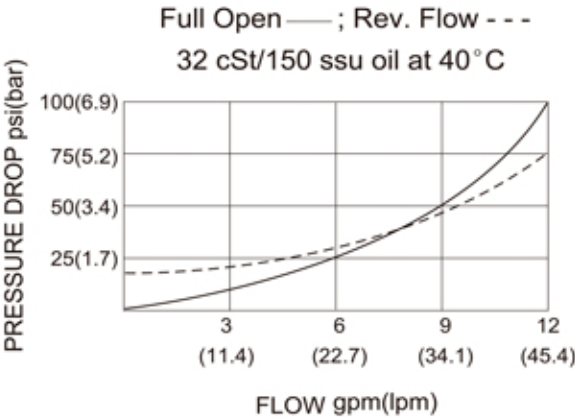
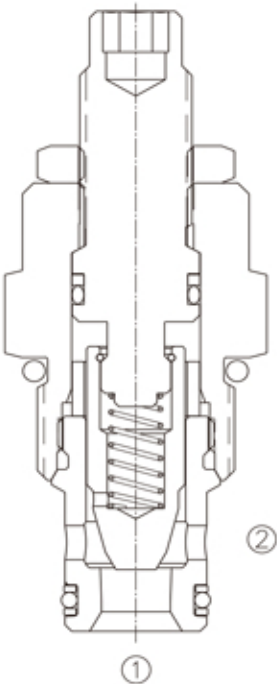
SYMBOL



SPECIFICATIONS

(Max.Operating Pressure):	250bar
(Flow):	See PRESSURE DROP VS.FLOW graph.
(Internal Leakage):	3 drops/min max. at shut-off
(Temperature):	-40°F to +250°F(-40°C to +120°C)
(Filtration):	See page N-1
(Fluids):	Mineral-based fluids with viscosities of 7.4 to 420 cSt.
(Cavity):	10-2, See page M-2
(Body Material):	6061-T6 aluminum alloy rated to 207bar, Steel & Ductile iron rated to 350bar

PRESSURE DROP VS.FLOW



LFC - 10 - * - * *

1 2 3 4

1 LFC=
Adjustable Cartridge
Flow Control Valve

3 **Adjustment**
K= 1-1/2" Dia Knob
Blank= (Omit for 1/4" Hex Allen head)

4 **Body Porting**
Blank= None
6T=SAE6
8T=SAE8
3G=G 3/8
4G=G 1/2

2 **Size**
10=10

Other Porting is Available

F

INSTALLATION DIMENSIONS

Unit=Millimeters

