

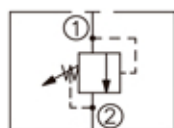
DESCRIPTION

A cartridge-style direct-acting poppet-type relief valve

OPERATION

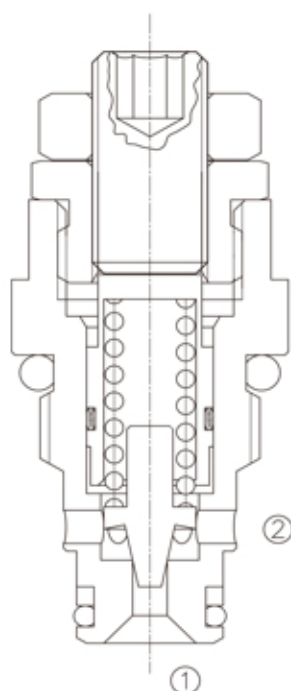
The valve prevents flow from ① to ② until the set crack pressure at ① is achieved. The poppet then unseats allowing flow from ① to ② protecting the circuit from over pressurization.

SYMBOL

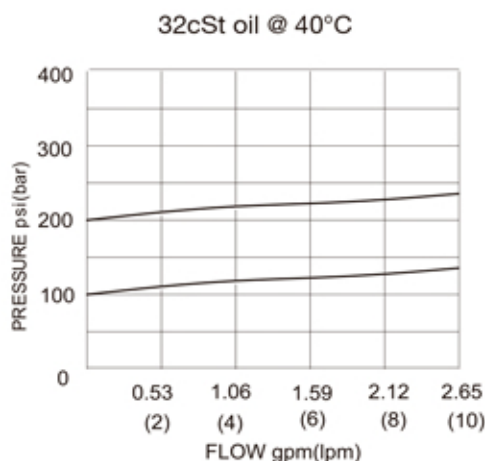


SPECIFICATIONS

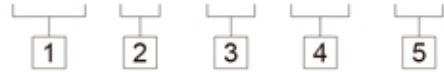
(Operating Pressure):	250bar
(Flow):	See PRESSURE DROP VS. FLOW graph.
(Internal Leakage):	5 drops/min max. to 80% of nominal setting
(Reseat Pressure):	80% of crack pressure (crack pressure at 0.95 lpm /0.25 gpm)
(Standard Spring Ranges):	40 to 250 bar;
(Temperature):	-40°F to +250°F(-40°C to +120°C)
(Filtration):	See page N-1
(Fluids):	Mineral-based fluids with viscosities of 7.4 to 420 cSt.
(Cavity):	08-2, See page M-1
(Body Material):	6061-T6 aluminum alloy rated to 207bar, Steel & Ductile iron rated to 350bar



PRESSURE DROP VS.FLOW



LRV -08 - * * / **** - * *



1 LRV=
Direct-Acting Relief Valve

2 Size
08=08

3 Spring Ranges
23=580-2300psi(40-160bar)
Preset:1600psi(110bar)
36=1150-3600psi(80-250bar)
Preset:2300psi(160bar)

4 Setting In Bar
Blank= Preset
EXAMPLE:0160 =160bar

5 Body Porting
Blank=None
4T=SAE4
6T=SAE6
2G=G 1/4
3G=G 3/8

Other Porting is Available

E

INSTALLATION DIMENSIONS

Unit=Millimeters

