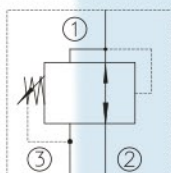


## Direct-acting, Pressure Reducing/Relieving Valve

### OPERATION

In its steady state, the valve allows flow to pass bi-directionally from ② to ①, with the spring chamber constantly drained at ③. On attainment of a pre-determined pressure at ①, the cartridge shifts to restrict input flow at ②, thereby regulating pressure at ①. In this mode, the valve will also relieve ① to ③ at approximately 10 bar over the reducing setting.

### SYMBOL



### FEATURES

- Adjustments prohibit springs from going solid.
- Optional spring ranges to 152 bar.
- Hardened spool and cage for long life.
- Industry common cavity.

### SPECIFICATIONS

**Operating Pressure :** 207 bar  
**Flow :** See Performance Chart

**Internal Leakage ② to ③**  
 82 cc/minute max. at  $\Delta P$  207 bar

**Standard Spring Ranges:**  
 3.4 to 20.7 bar; Preset: 10.3 bar  
 6.9 to 41.4 bar; Preset: 20.7 bar  
 20.7 to 82.8 bar; Preset: 41.4 bar  
 34.5 to 152 bar; Preset: 76 bar

**Temperature :** -22°F to +250°F (-30°C to +120°C)

**Filtration :** Critical Application-ISO 16/12.  
 Non-Critical Application-ISO 19/15

**Fluids :** Mineral-based fluids.

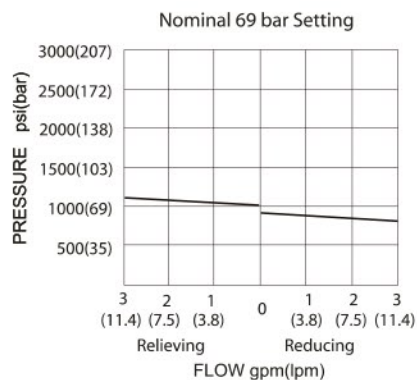
For other fluid compatibility consult factory.

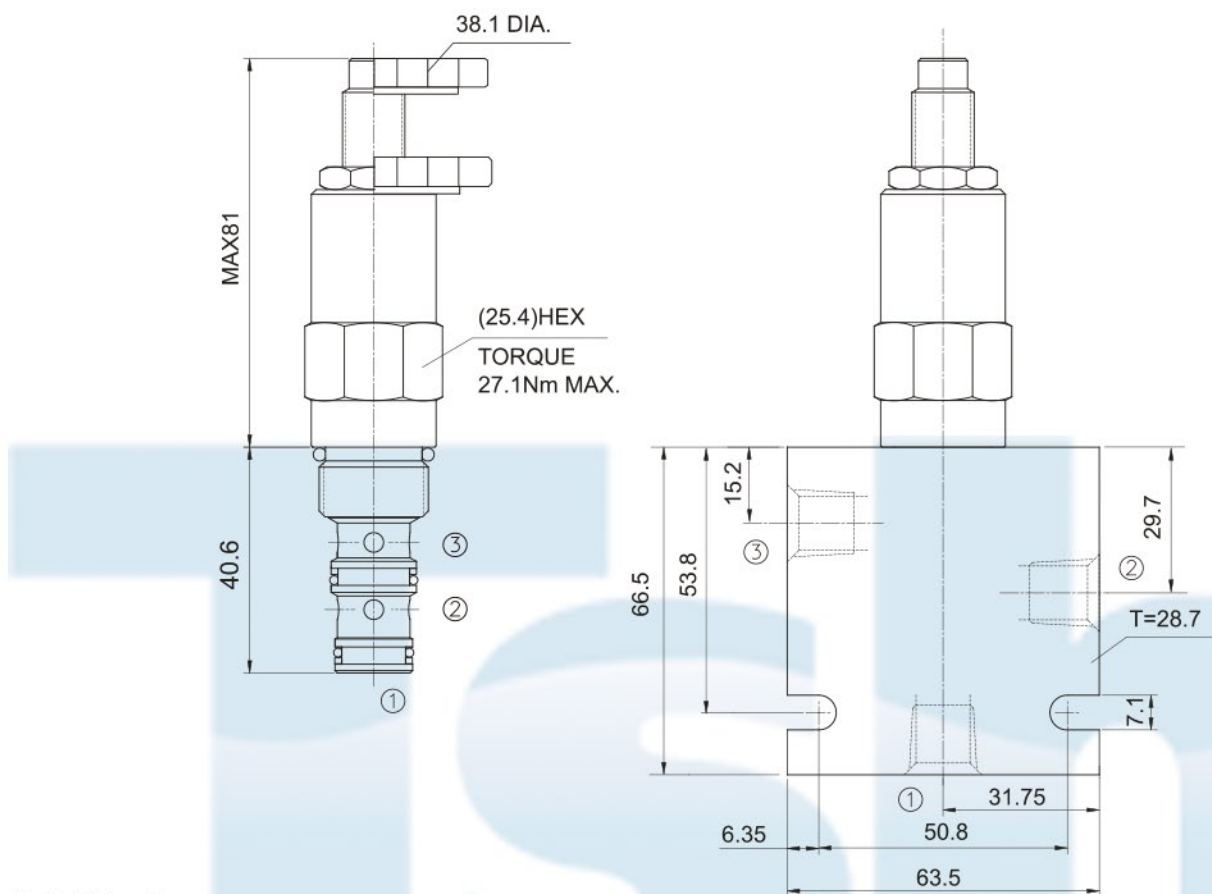
**Cavity :** 08-3; See page 402

**Body Material :** Anodized 6061T6 aluminum alloy rated at 207 Bar.  
 6061-T6, 207 Bar.

### PERFORMANCE CHART

150 ssu/32 cSt OIL @ 100°F / 38°C





Unit=Millimeters

## TO ORDER

LDPR - 08 - \* \* - \* / \* \* \* \* - \* \*

DIRECT-ACTING, PRESSURE  
REDUCING/ RELIEVING VALVE

CAVITY

Spring Range

3= 50 to 300 psi ( 3.4 to 20.7 bar ),Preset:10.3 bar;  
6=100 to 600 psi ( 6.9 to 41.4 bar),Preset:20.7 bar;  
12=300 to 1200 psi (20.7 to 82.8 bar),Preset:41.4 bar;  
22=500 to 2200 psi(34.5 to 152 bar),Preset: 76 bar;

BODY PORTING  
4T=SAE4  
6T=SAE6  
2G=G 1/4  
3G=G 3/8  
Other Porting is Available

(Omit for Cartridge only)

SETTING IN BAR (BAR)  
EXAMPLE: 0100=100BAR

K 1-1/2' Dia. Knob

(Omit for 1/4' Hex Allen head)