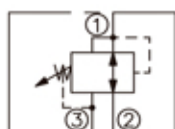


## DESCRIPTION

A cartridge-style direct-acting spool-type pressure reducing/relieving valve

## SYMBOL



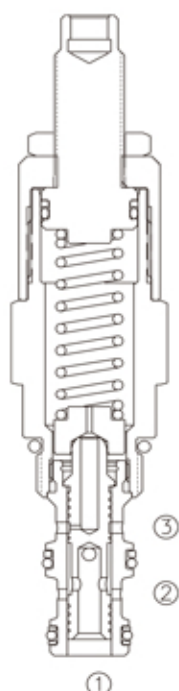
## OPERATION

In its steady state, the valve allows flow to pass bi-directionally from ② to ①, with the spring chamber constantly drained at ③. On attainment of a pre-determined pressure at ①, the cartridge shifts to restrict input flow at ②, thereby regulating pressure at ①. In this mode, the valve will also relieve ① to ③ at approximately 10 bar over the reducing setting.

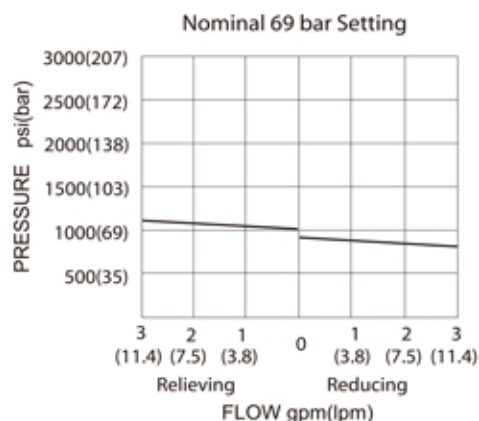
## SPECIFICATIONS

(Operating Pressure):	207bar
(Flow):	See performance chart
(Internal Leakage):	from ② to ③ 82 cc/min. max. at $\Delta P$ 207 bar
(Standard Spring Ranges):	3.4 to 20.7 bar, preset :10.3bar 6.9 to 41.4 bar, preset :20.7bar 20.7 to 82.8 bar, preset :41.4bar 34.5 to 152 bar, preset : 76bar
(Temperature):	-40°F to +250°F(-40°C to +120°C)
(Filtration):	See page N-1
(Fluids):	Mineral-based fluids with viscosities of 7.4 to 420 cSt.
(Cavity):	08-3, See page M-1
(Body Material):	

6061-T6 aluminum alloy rated to 207bar, Steel & Ductile iron rated to 350bar



## PRESSURE DROP VS.FLOW



**LDPR - 08 - \* \* - \* / \*\*\*\* - \* \***

1 2 3 4 5 6

**1 LDPR=**  
Direct-acting Spool-type  
Pressure Reducing/Relieving Valve

**2 Size**  
08=08

**3 Spring Ranges**  
3=50-300psi(3.4-20.7bar)  
Preset:10.3bar  
6=100-600psi(6.9-41.4bar)  
Preset:20.7bar  
12=300-1200psi(20.7-82.8bar)  
Preset:41.4bar  
22=500-2200psi(34.5-152bar)  
Preset:76bar

**4 Adjustment**  
K= 1-1/2"Dia Knob  
(Omit for 1/4 Hex Allen head)

**5 Setting In Bar**  
Blank = Preset  
Example:0100=100bar

**6 Body Porting**  
Blank = None  
4T=SAE4  
6T=SAE6  
2G=G 1/4  
3G=G 3/8

Other Porting is Available

## INSTALLATION DIMENSIONS

Unit=Millimeters

