

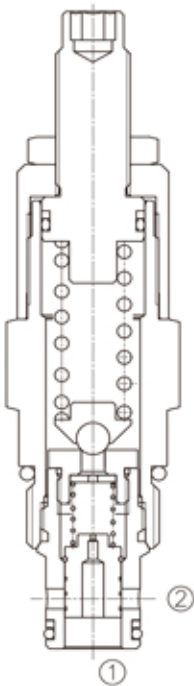
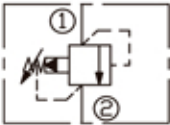
DESCRIPTION

A cartridge-style pilot-operated spool-type relief valve

OPERATION

The valve prevents flow from ① to ② until pressure at ① exceeds the set crack pressure and opens the pilot section. The pilot flow creates a pressure differential across the spool which causes the valve to open allowing flow from ① to ② protecting the circuit from over pressurization.

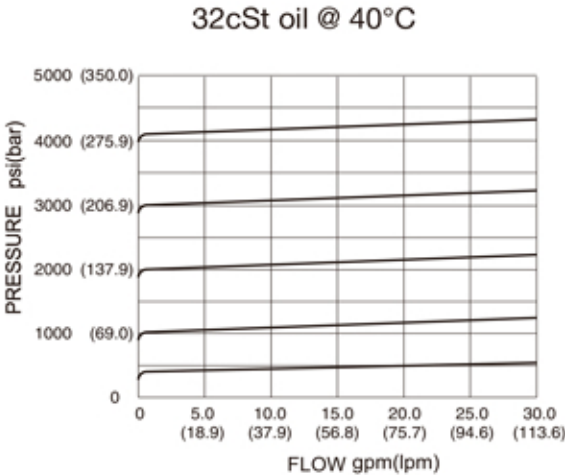
SYMBOL



SPECIFICATIONS

(Max. Operating Pressure):	350bar
(Flow):	See PRESSURE DROP VS. FLOW graph.
(Internal Leakage):	82 cc/min. max. to 80% of nominal setting
(Reseat Pressure):	85% of crack pressure (crack pressure at 0.95 lpm /0.25 gpm)
(Standard Spring Ranges):	7 to 28 bar; preset : 21 bar 21 to 138 bar; preset : 69 bar 28 to 207 bar; preset :138 bar 41 to 350 bar; preset :207 bar
(Temperature):	-40°F to +250°F(-40°C to +120°C)
(Filtration):	See page N-1
(Fluids):	Mineral-based fluids with viscosities of 7.4 to 420 cSt.
(Cavity):	10-2, See page M-2
(Body Material):	Steel & Ductile iron rated to 350bar

PRESSURE DROP VS.FLOW



LPSRV - 10 - \* \* - \* / \* \* \* \* - \* \*

1 2 3 4 5 6

- 1

LPSRV=  
Pilot-Operated Spool-type  
Relief Valve
- 2

Size  
10=10

- 3

Spring Ranges  
4=101-400psi(7-28bar)  
Preset:300psi(21bar)  
20=300-2000psi(21-138bar)  
Preset:1000psi(69bar)  
30=400-3000psi(28-207bar)  
Preset:2000psi(138bar)  
50=600-5000psi(41-350bar)  
Preset:3000psi(207bar)
- 4

Adjustment  
K= 1-1/2'Dia Knob  
(Omit for 1/4' Hex Allen head)

- 5

Setting In Bar  
Blank = Preset  
Example:0250=250bar
- 6

Body Porting  
Blank = None  
6T=SAE6  
8T=SAE8  
3G=G 3/8  
4G=G 1/2
- Other Porting is Available

E

INSTALLATION DIMENSIONS

Unit=Millimeters

