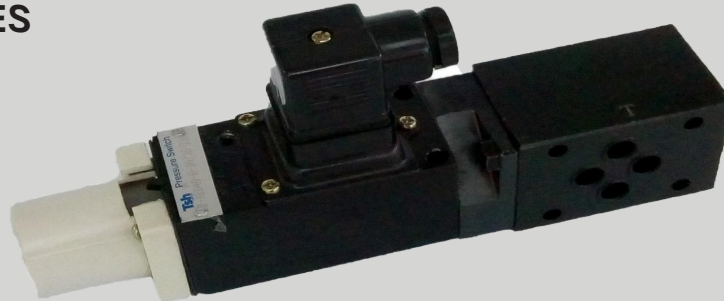
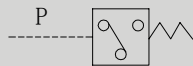


# AED4 SERIES PRESSURE SWITCH/ZAED4 SERIES PRESSURE SWITCH



## SYMBOL



### ▶ Technical data

|   |        |  |
|---|--------|--|
| Operating Pressure range(Mpa)             |        | 5; 10; 35                                  |
| Switching frequency(Time/min)             |        | 120  |
| Fluid temperature range(°C)               |        | -20 ~ 80                                   |
| Weight(KGS)                               | AED4OA | 0.7  |
|   | AED4OP | 0.9  |
| Valve body ( Material ) Surface treatment |        | Steel Body Surface Black Oxide             |
| Oil cleanliness                           |        | NAS1638 class 9 and ISO4406 class 20/18/15 |

AED40 P 10 / 10 Z14 / 2 V \*

Model

P=Subplate mounting  
A=Threaded connection  
H=Modular mounting

Series number

Pressure range (Mpa) 5;10;35

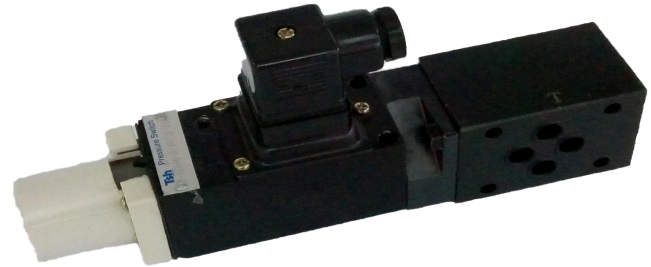
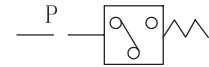
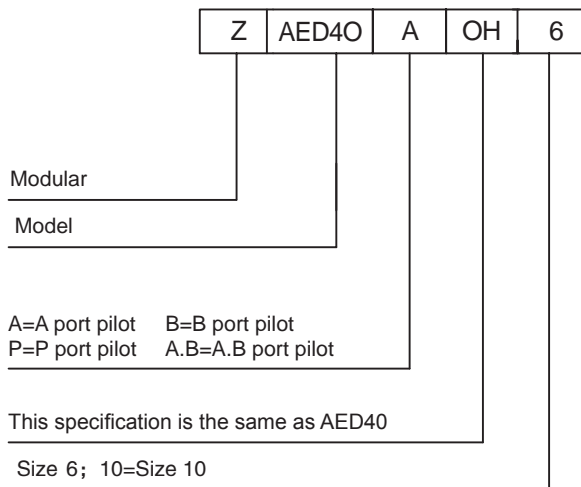
For further details

No code=NBR seals for petroleum oils  
V=FPM seals for phosphate ester

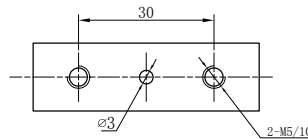
No code=Inch  
2=Metric

Small plug

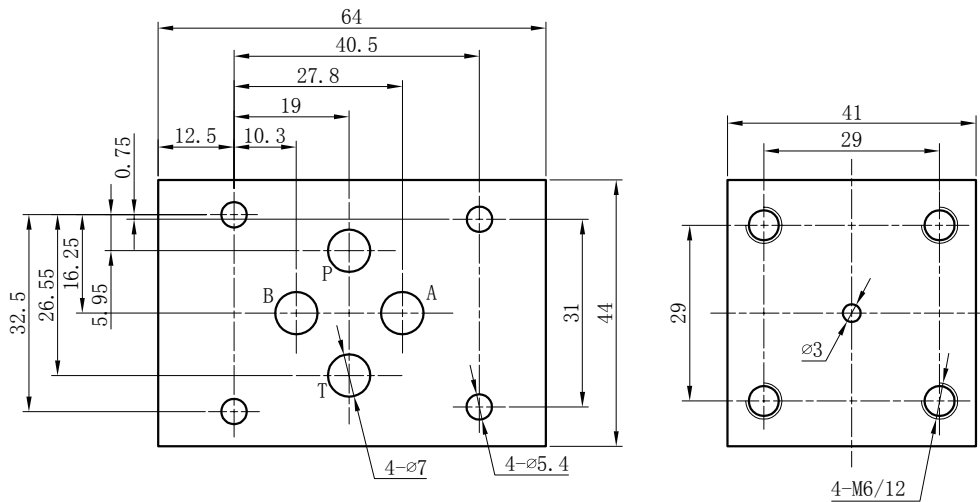
► For function and usage see the AED1 series piston pressure switch



► OP Installation Dimensions



► ZAED Size 6 subplate



► ZAED Size 10 subplate

