

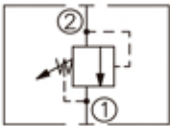
DESCRIPTION

A cartridge-style direct-acting differential area poppet-type relief valve

OPERATION

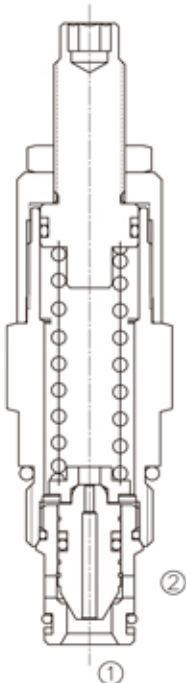
The valve blocks flow from ② to ① until sufficient pressure is present at ② to force the poppet from its seat.

SYMBOL

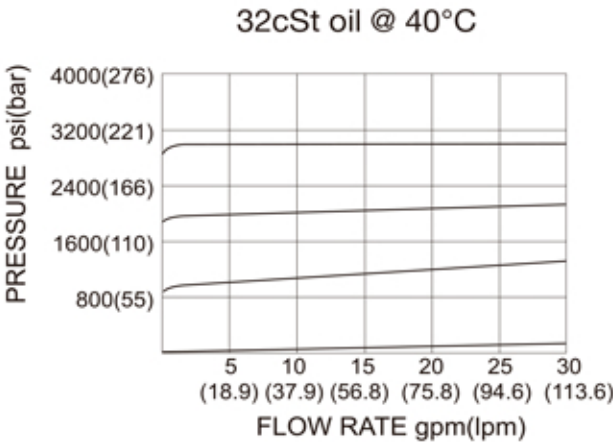


SPECIFICATIONS

(Operating Pressure):	207bar
(Flow):	See PRESSURE DROP VS. FLOW graph.
(Internal Leakage):	5 drops/min max. to 80% of nominal setting
(Reseat Pressure):	80% of crack pressure (crack pressure at 0.95 lpm /0.25 gpm)
(Standard Spring Ranges):	3 to 41 bar, preset : 20bar 10 to 80 bar, preset : 40bar 17 to 150 bar, preset : 80bar 20 to 210 bar, preset :120bar
(Temperature):	-40°F to +250°F(-40°C to +120°C)
(Filtration):	See page N-1
(Fluids):	Mineral-based fluids with viscosities of 7.4 to 420 cSt.
(Cavity):	10-2, See page M-2
(Body Material):	6061-T6 aluminum alloy rated to 207bar, Steel & Ductile iron rated to 350bar



PRESSURE DROP VS.FLOW



LDRV - 10 - * * - * / ** - * ***

1 2 3 4 5 6

1 LDRV=
 Direct-Acting Differential Area
 Poppet-Type Relief Valve

2 Size
 10=10

3 Spring Ranges
 6=50-600psi(3-41bar)
 Preset:290psi(20bar)
 12=150-1200psi(10-80bar)
 Preset:580psi(40bar)
 23=250-2300psi(17-150bar)
 Preset:1160psi(80bar)
 30=290-3000psi(20-207bar)
 Preset:1740psi(120bar)

4 Adjustment
 K= 1-1/2'Dia Knob
 (Omit for 1/4' Hex Allen head)

5 Setting In Bar
 Blank = Preset
 Example:0150=150bar

6 Body Porting
 Blank= None
 6T=SAE6
 8T=SAE8
 3G=G 3/8
 4G=G 1/2

Other Porting is Available

E

INSTALLATION DIMENSIONS

Unit=Millimeters

