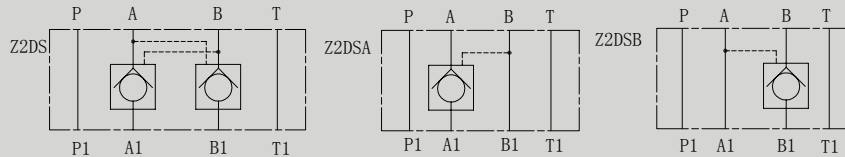


## Z2DS SERIES PILOT CONTROLLED MODULAR CHECK VALVES



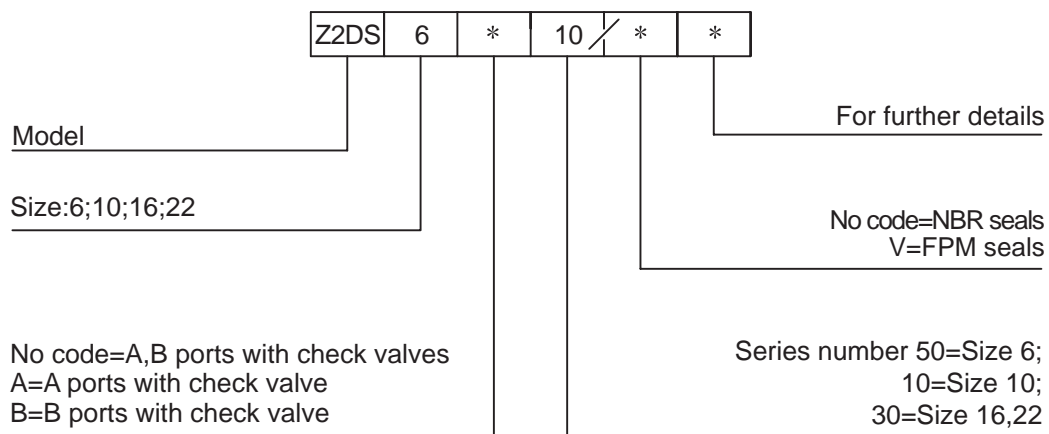
### SYMBOL



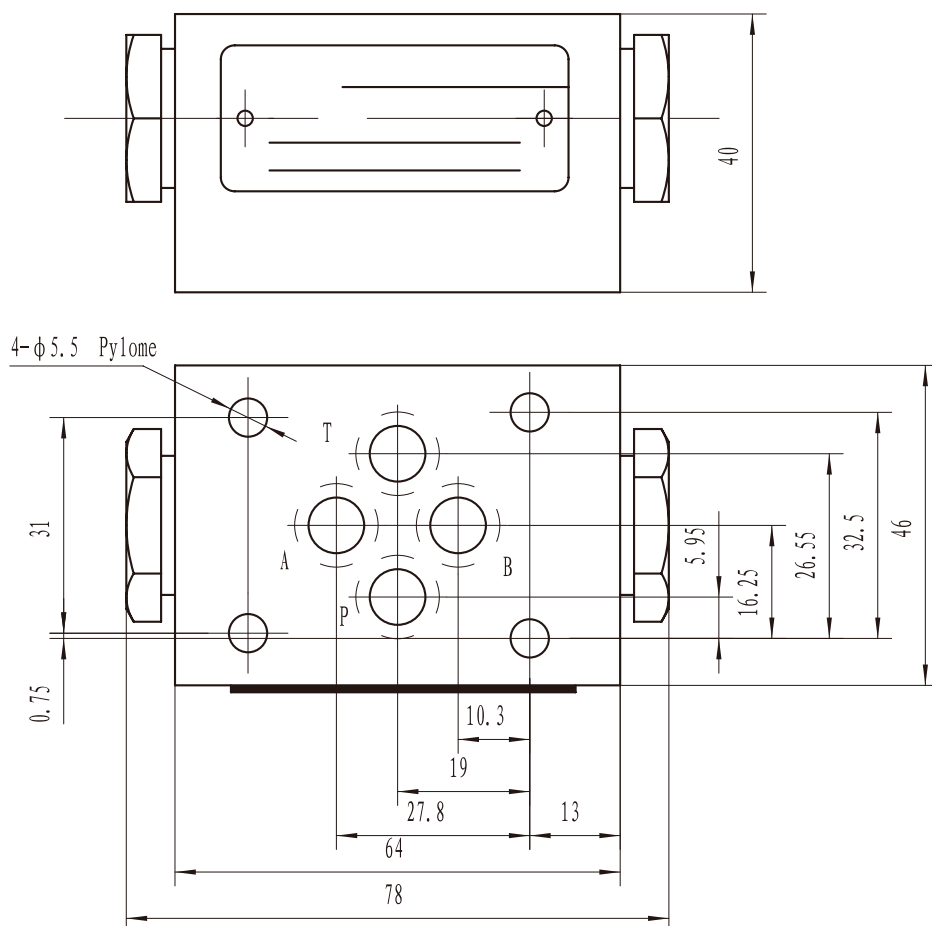
Z2DS series are pilot operated style sandwich valves. These valves used to close one or two actuator ports.

### Technical data

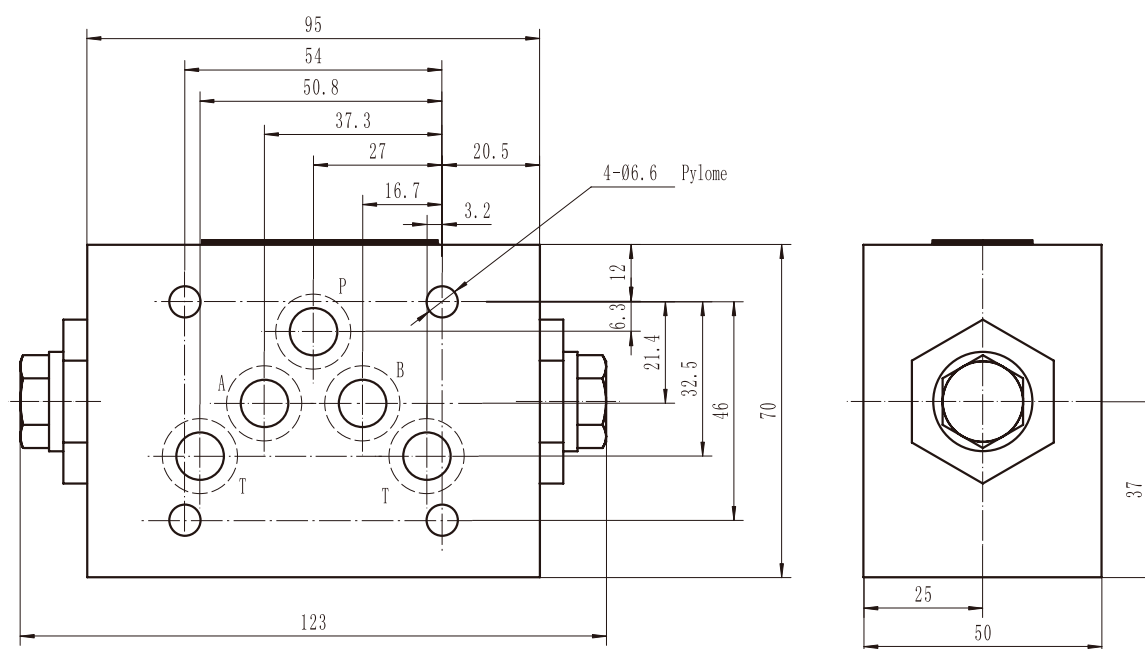
Size	6	10	16	22
Operating pressure (MPa)	31.5	31.5	31.5	31.5
Flow rate (L/min)	50	80	200	300
Fluid temperature range ( °C )	-30 ~ 80°C	-30 ~ 80°C	-30 ~ 80°C	-30 ~ 80°C
Weight(KGS)	1	2.2	6.8	12.8
Valve body ( Material ) Surface treatment	casting phosphating surface			
Oil cleanliness	NAS1638 class 9 and ISO4406 class 20/18/15			



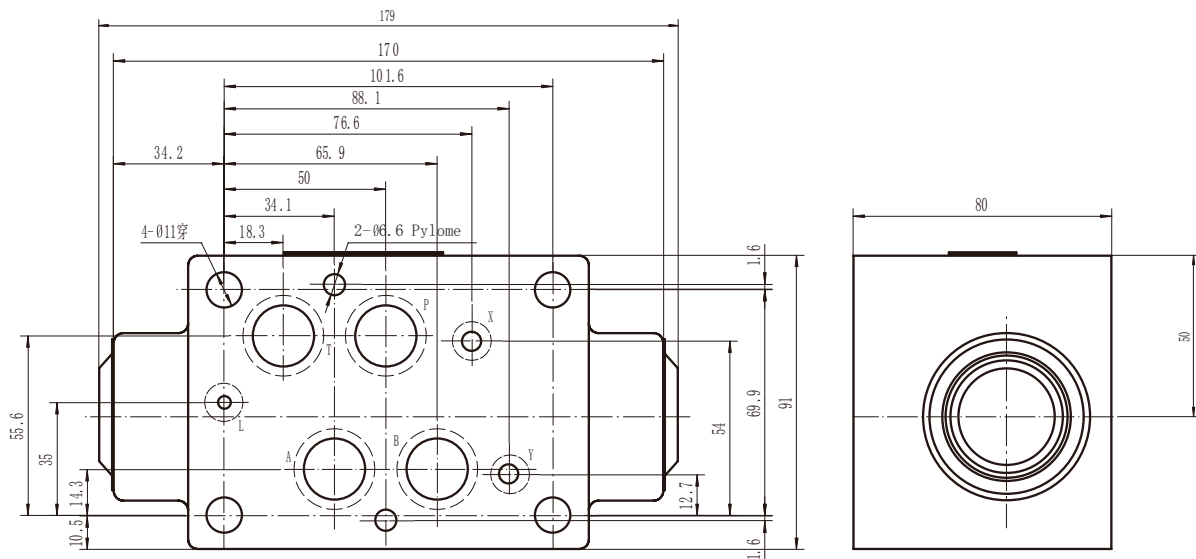
► Z2DS6 External Dimensions and Fittings



► Z2DS10 External Dimensions and Fittings



► Z2DS16 External Dimensions and Fittings



► Z2DS22 External Dimensions and Fittings

