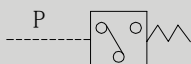


LPS-01 PRESSURE SWITCH

SYMBOL





LPS-01 series piston pressure switches are adopted micro-switch to control the start or stop of hydraulic components, it has characteristic of large pressure control range ,easy operation and installation.

Technical data

Model	LPS
Operating Pressure(Mpa)	0.5–31.5
Connection threaded	Z1/4
Max.operating pressure(V)	240
Switching frequency(Time/min)	To 300
Weight(KGS)	0.8
Oil cleanliness	NAS1638 class 9 and ISO4406 class 20/18/15

