

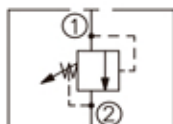
DESCRIPTION

A cartridge-style direct-acting poppet-type relief valve

OPERATION

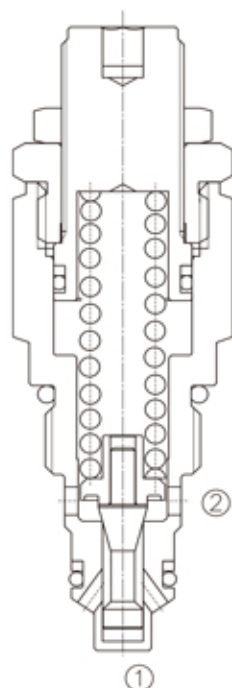
The valve prevents flow from ① to ② until the set crack pressure at ① is achieved. The poppet then unseats allowing flow from ① to ② protecting the circuit from over pressurization.

SYMBOL

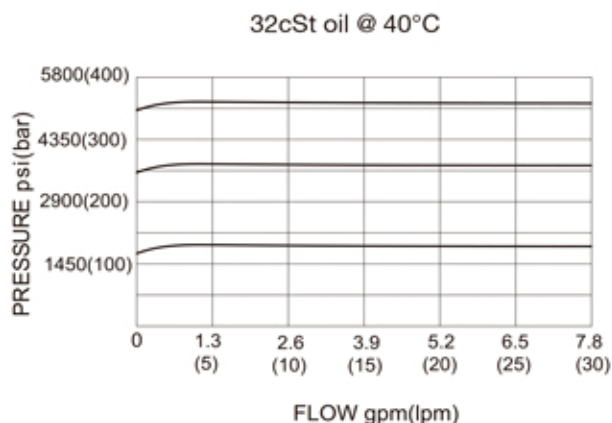


SPECIFICATIONS

(Operating Pressure):	350bar
(Flow):	See PRESSURE DROP VS. FLOW graph.
(Internal Leakage):	5 drops/min max. to 80% of nominal setting
(Reseat Pressure):	80% of crack pressure (crack pressure at 0.95 lpm /0.25 gpm)
(Standard Spring Ranges):	20 to 125 bar; preset : 69 bar 40 to 180 bar; preset :138 bar 180 to 350 bar; preset :207 bar
(Temperature):	-40°F to +250°F(-40°C to +120°C)
(Filtration):	See page N-1
(Fluids):	Mineral-based fluids with viscosities of 7.4 to 420 cSt.
(Cavity):	08-2, See page M-1
(Body Material):	Steel & Ductile iron rated to 350bar



PRESSURE DROP VS.FLOW



LNRV -08 - * * - * / **** - * *



1 LNRV=
Direct-Acting Relief Valve

2 Size
08=08

3 Spring Ranges
18=290-1800psi(20-125bar)
Preset:1000psi(69bar)
26=580-2600psi(40-180bar)
Preset:2000psi(138bar)
50=2600-5000psi(180-350bar)
Preset:3000psi(207bar)

4 Adjustment
K= 30mm Dia Knob
(Omit for 5 Hex Allen head)

5 Setting In Bar
Blank= Preset
Example:0200=200bar

6 Body Porting
Blank= None
4T=SAE4
6T=SAE6
2G=G 1/4
3G=G 3/8

Other Porting is Available

E

INSTALLATION DIMENSIONS

Unit=Millimeters

