

DESCRIPTION

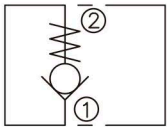
An in-line, poppet-type check valve

OPERATION

When pressure at ① rises above the spring bias pressure, the poppet is lifted and flow allowed from ① to ② .

The valve is closed (checked) from ② to ①.

SYMBOL



SPECIFICATIONS

(Max.Operating pressure):	350bar
(Flow):	See PRESSURE DROP VS.FLOW graph.
(Internal Leakage):	2 drops/min max. at 350bar
(Crack Pressures):	<0.5bar
(Temperature):	-40°F to +250°F(-40°C to +120°C)
(Fluids):	Mineral-based fluids with viscosities of 7.4 to 420 cSt.
(Body Material):	Steel & Ductile iron rated to 350bar

PRESSURE DROP VS.FLOW

32cSt oil @ 40°C

