

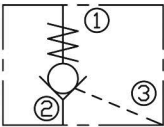
DESCRIPTION

A cartridge-style pilot-to-open poppet-type check valve

OPERATION

The valve allows flow from ② to ① , while normally blocking flow from ① to ② . Flow will be allowed from ① to ② when sufficient pressure is applied at ③ . The cartridge has a 3:1 pilot ratio, meaning that at least one-third of the load pressure held at ① is required at ③ to open the valve.

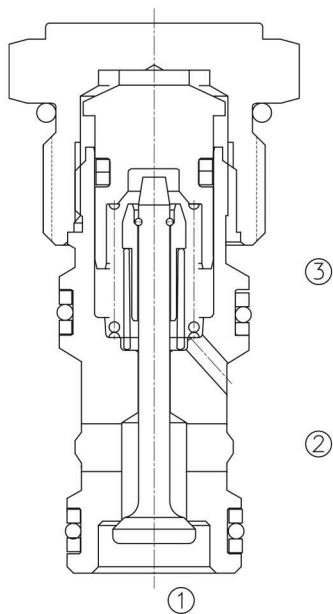
SYMBOL



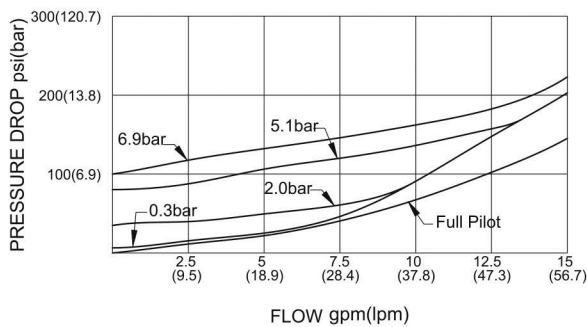
SPECIFICATIONS

(Operating Pressure):	350bar
(Flow):	See PRESSURE DROP VS.FLOW graph.
(Internal Leakage):	2 drops/min max. at 350bar
(Crack Pressures):	0.3=0.3bar 2.0=2.0bar 5.1=5.1bar 6.9=6.9bar
(Pilot Ratio):	3:1
(Temperature):	-40°F to +250°F(-40°C to +120°C)
(Filtration):	See page N-1
(Fluids):	Mineral-based fluids with viscosities of 7.4 to 420 cSt.
(Cavity):	10-3S,See page M-2
(Body Material):	Steel & Ductile iron rated to 350bar

PRESSURE DROP VS.FLOW



32cSt oil @ 40°C



LPOC1 – 10-3S – * * – * *

1 2 3 4

- 1 LPOC1=

Pilot to Open Check Valve
- 2 Size

10-3S=10-3S

- 3 Cracking Pressure

0.3=0.3bar

2.0=2.0bar

5.1=5.1bar

6.9=6.9bar

- 4 Body Porting

Blank=None

6T=SAE6

8T=SAE8
- Other Porting is Available

INSTALLATION DIMENSIONS

Unit=Millimeters

