

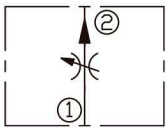
DESCRIPTION

A cartridge-style adjustable pressure-compensated flow control valve

OPERATION

The valve maintains a constant flow within specified accuracies from ① to ② regardless of downstream load pressure. When flow produces a minimum predetermined pressure differential across the compensator spool control orifice, the spool shifts against the spring force to throttle the flow and maintain the flow setting. Reverse flow is not regulated.

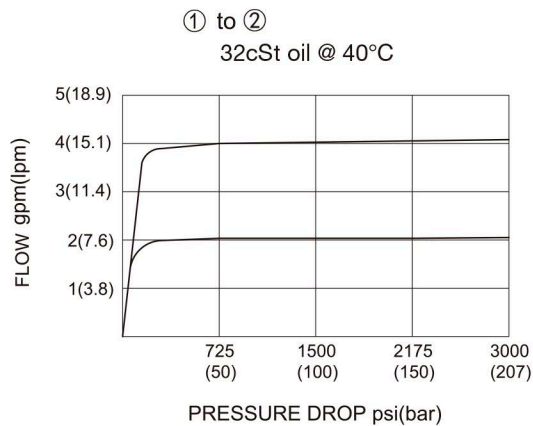
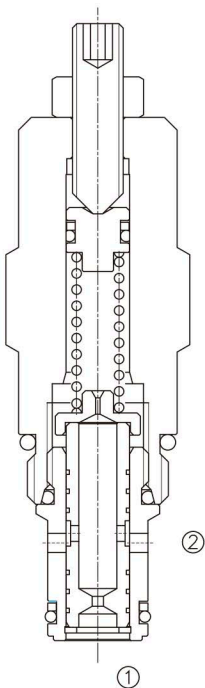
SYMBOL



SPECIFICATIONS

(Operating Pressure):	240bar
(Flow Setting):	3-26 l/min.
(Flow Maintenance Accuracy):	±15%
(Temperature):	-40°F to +250°F(-40°C to +120°C)
(Filtration):	See page N-1
(Fluids):	Mineral-based fluids with viscosities of 7.4 to 420 cSt.
(Cavity):	10-2, See page M-2
(Body Material):	6061-T6 aluminum alloy rated to 207bar, Steel & Ductile iron rated to 350bar

PRESSURE DROP VS.FLOW



LFRA – 10 – * * – * *

┌───┐
1

┌───┐
2

┌───┐
3

┌───┐
4

1 LFRA=
Adjustable Pressure-compensated
Flow Control Valve

3 Flow Setting
M4.6=3-10Lpm
M16=11-26Lpm
M30=15-30Lpm

4 Body Porting
Blank= None
6T=SAE6
8T=SAE8
3G=G 3/8
4G=G 1/2

2 Size
10=10

Other Porting is Available

INSTALLATION DIMENSIONS

Unit=Millimeters

