

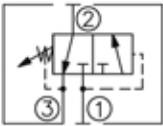
DESCRIPTION

A cartridge-style spool-type sequence valve with internal pilot and drain

OPERATION

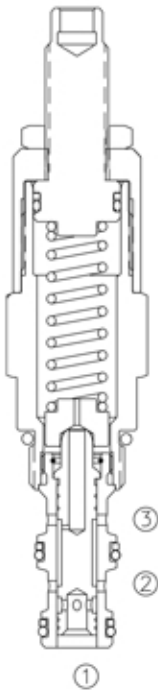
In its steady state, the valve blocks flow at ①, while allowing flow to pass from ② to ③ .On attainment of a pre-determined pressure at ①, the cartridge shifts to open ① to ②.

SYMBOL

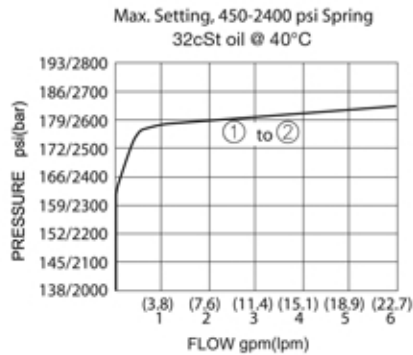
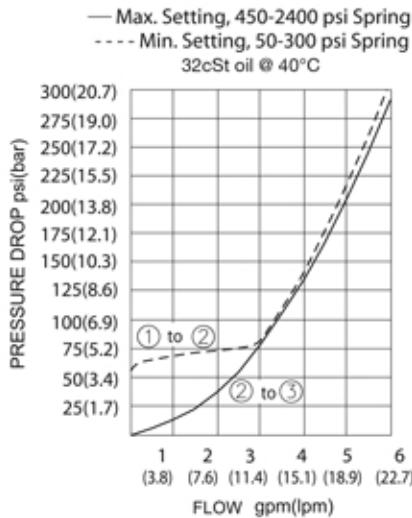


SPECIFICATIONS

(Operating Pressure):	240bar
(Flow):	See PRESSURE DROP VS. FLOW graph.
(Internal Leakage):	82 cc/min. max. to 85% of nominal setting
(Standard Spring Ranges):	3.4- 20.7 bar, preset:10 bar 6.9- 41.4 bar, preset:21 bar 10.3- 89.7 bar, preset:45 bar 31.0-165.5 bar, preset:83 bar
(Temperature):	-40°F to +250°F(-40°C to +120°C)
(Filtration):	See page N-1
(Fluids):	Mineral-based fluids with viscosities of 7.4 to 420 cSt.
(Cavity):	08-3, See page M-1
(Body Material):	6061-T6 aluminum alloy rated to 207bar, Steel & Ductile iron rated to 350bar



PRESSURE DROP VS.FLOW



LPS - 08 - * * - * / ** - * ***

1 2 3 4 5 6

1 LPS= Sequence Valve With Internal Pilot and Drain	3 Spring Ranges 3=50-300psi(3.4-20.7bar) Preset:145psi(10bar) 6=100-600psi(6.9-41.4bar) Preset:300psi(21bar) 13=150-1300psi(10.3-89.7bar) Preset:650psi(45bar) 24=450-2400psi(31.0-165.5bar) Preset:1200psi(83bar)	5 Setting In Bar Blank=Preset Example:0120=120Bar
2 Size 08=08	4 Adjustment K= 1-1/2'Dia Knob (Omit for 1/4' Hex Allen head)	6 Body Porting Blank= None 4T=SAE4 6T=SAE6 2G=G 1/4 3G=G 3/8 Other Porting is Available

INSTALLATION DIMENSIONS

Unit=Millimeters

