

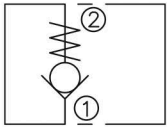
## DESCRIPTION

A cartridge-style poppet-type check valve

## OPERATION

Pressure at ① overcomes the spring-bias poppet and allows free flow from ① to ② . Flow in the opposite direction, from ② to ① , is blocked by the poppet.

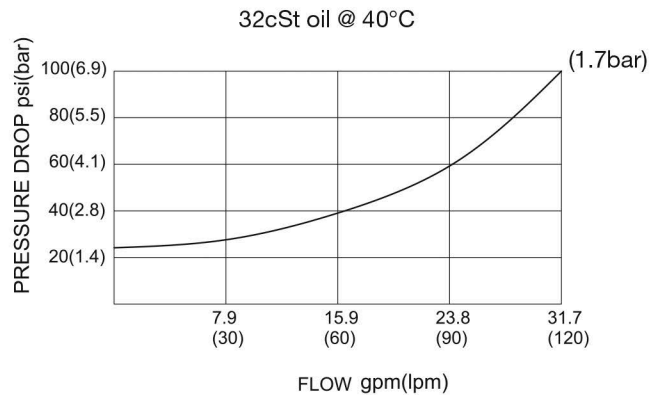
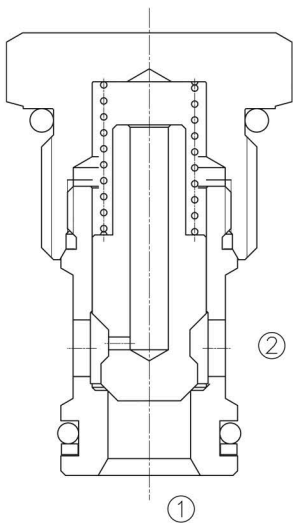
## SYMBOL



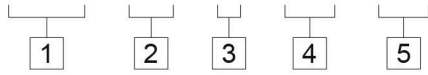
## SPECIFICATIONS

(Operating Pressure):	250bar
(Flow):	See PRESSURE DROP VS.FLOW graph.
(Internal Leakage):	5 drops/min max. at 250bar
(Crack Pressures):	1.7=1.7bar 4.5=4.5bar
(Temperature):	-40°F to +250°F(-40°C to +120°C)
(Filtration):	See page N-1
(Fluids):	Mineral-based fluids with viscosities of 7.4 to 420 cSt.
(Cavity):	12-2, See page M-3
(Body Material):	6061-T6 aluminum alloy rated to 207bar, Steel & Ductile iron rated to 350bar

## PRESSURE DROP VS.FLOW



## LCV - 12 - P - \* \* - \* \*



1 LCV= Check Valve

2 **Size**  
12=12

3 P= Poppet

4 **Cracking Pressure**  
1.7=1.7bar  
4.5=4.5bar

5 **Body Porting**

Blank=None  
10T=SAE10  
12T=SAE12  
6G=G 3/4  
8G=G 1

Other Porting is Available

### INSTALLATION DIMENSIONS

Unit=Millimeters

