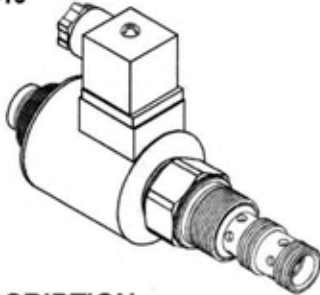


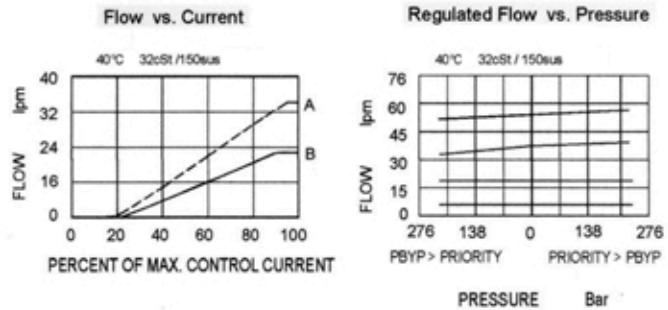
EVF SERIES PROPORTIONAL FLOW VALVES

EVF

◆ MODEL EVF-10



◆ PERFORMANCE



◆ DESCRIPTION 説明

Proportional flow valve. It can be used as a priority-type flow regulator with pressure-compensated, regulated and bypass flow. It can also be used as a restrictive-type 2-way, pressure-compensated flow regulator when the bypass line (port ②) is blocked.

◆ SPECIFICATIONS

Model Number	Operating Pressure bar	Maximum Flow lpm	Weight Kg
EVF-10	240 (3500 psi)	53 (14 gpm)	0.3 (0.66 lbs)
Fluid Type		ISO VG 32, 46, 68	
Viscosity cSt		10~400 (59~1854 SSU)	
Operating Temperature °C		-15~70 (-5~158°F)	
Contamination Level		ISO4406. 21/19/16 NAS1638,10	

◆ HOW TO ORDER

1	2	3	4	5
EVF	10	A	NC	D2

1 VALVE SERIES

EVF = Proportional Flow Valves

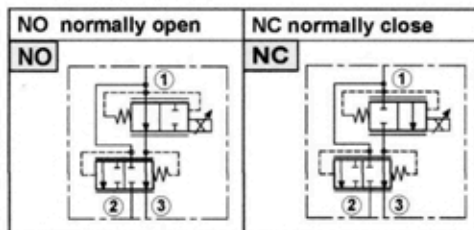
2 SUBPLATE MOUNTING SIZE

Size:10
Cavity : CS10-3N

3 MAXIMUM INPUT FLOW

Model	Regulated Flow Rate lpm
A	50 lpm (13 gpm)
B	26 lpm (7 gpm)

4 CONTROL PORT(S)



5 TYPE OF COIL

Non : Without Coil
D1 : DC12V
D2 : DC24V

● TYPE OF COIL

Model number : COS12
See Page Appendixes-D_032

● Coils must be ordered separately

◆ DIMENSIONS

