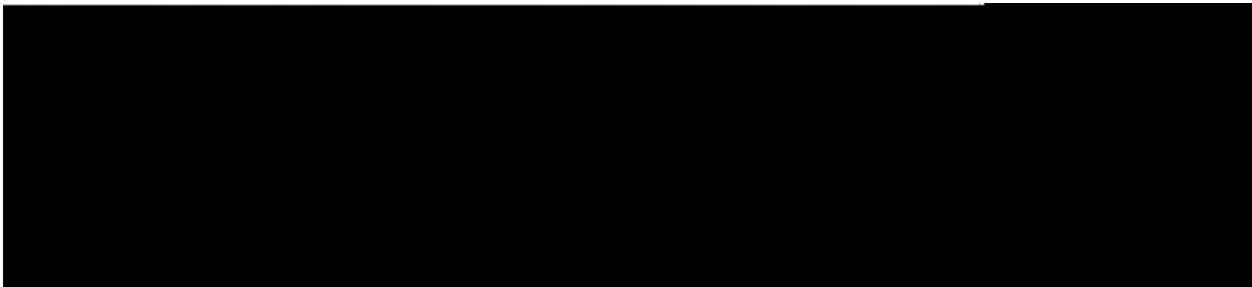


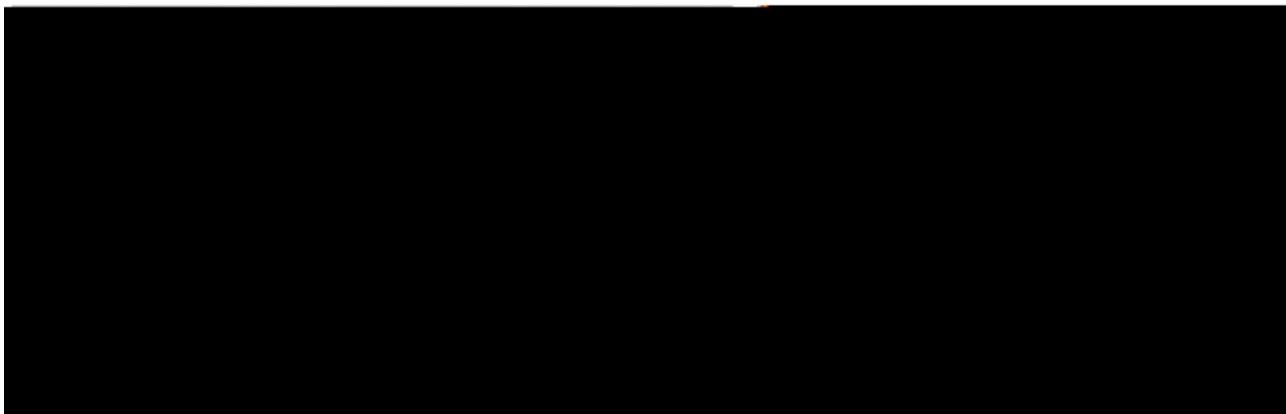
**DIRCO
VALVES**

Tsh
COMPANY

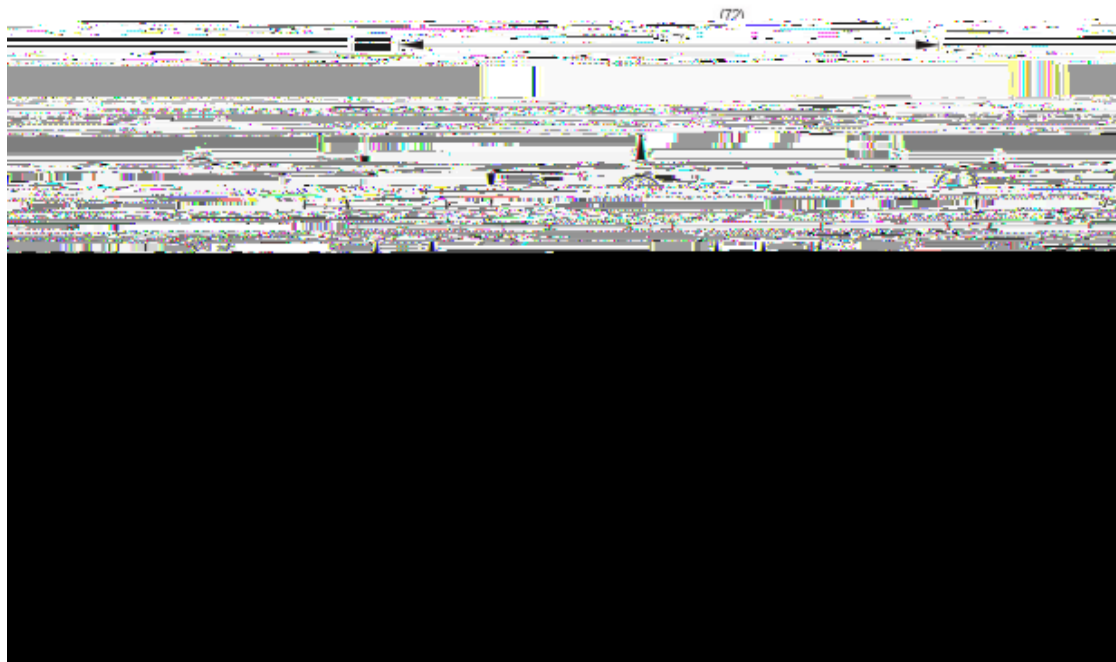
► Technical



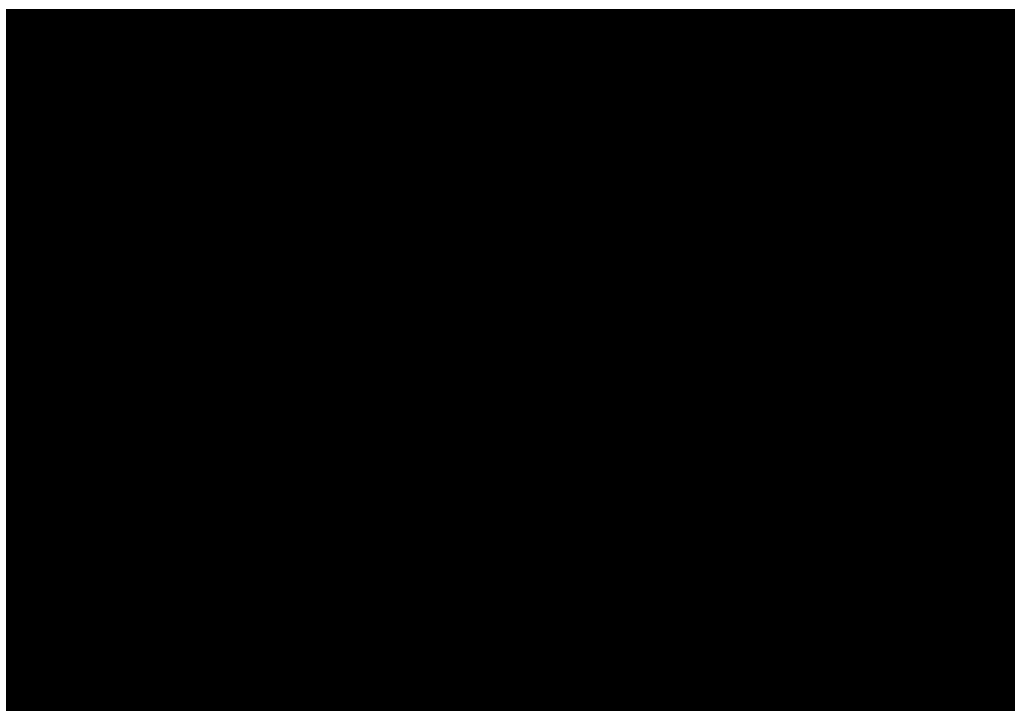
► Electrical



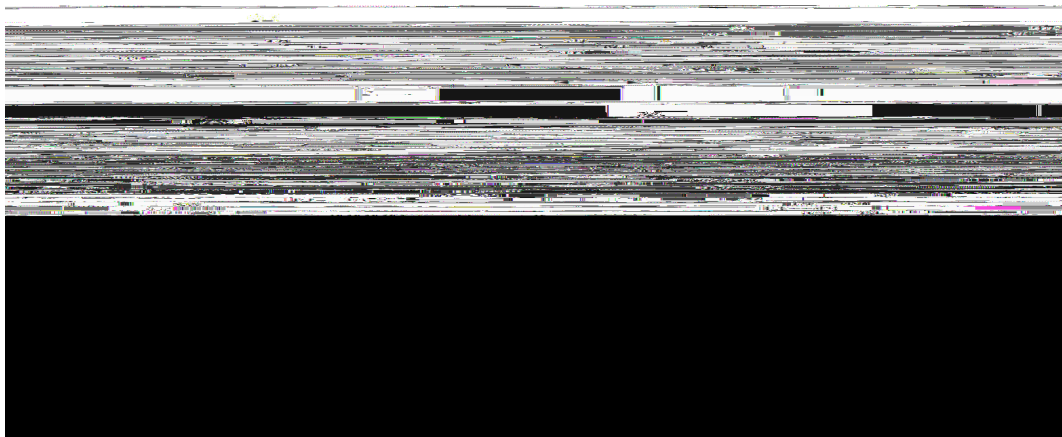
▶ VPTSHE CM-06 Subplate Installation Dimensions



▶ VPTSHE CM-10 Subplate Installation Dimensions



► Electrical connection, plug-in connectors



► PIN allocation of the component Plug



► Model description

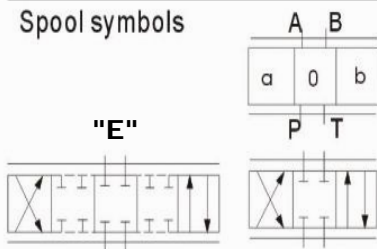
VPTSH — E — * — * — * — **2X** — **G24** — * — * — * — * — *

Directional proportional valve

No code Without integrated electronics
With integrated electronics

CM - SPOOL WITH DISPLACEMENT
SENSOR

Spool symbols



With spool symbols:

P→A: q_{vmax} B→T: $q_v/2$

P→B: $q_v/2$ A→T: q_{vmax}

"J"

DN 6

DN 10

Nominal flow at valve pressure differential $\Delta p = 10$ bar

DN 6

07 7 L/min

15 15 L/min

30 26 L/min

DN 10

30 30 L/min

60 60 L/min

Further details in clear text

Omit Nitrile rubber sealing
V NBR seals suitable for mineral oil
(HL, HLP) to DIN 51 524

No code BFW BFWN
A1 Command value input $\pm 10V$
F1 Command value input 4~20mA

²⁾K4 Electrical connection For BFW (type)
with plug component DIN EN 175301-803

See page A.3.3

²⁾K31 with plug component DIN 43 650-AM2
See page A.3.4

Special protection

No code Without special protection

¹⁾J Seawater-resistant(only for DN6)

No code 24V 24 VDC

2X Component series 20 to 29 (20 to 29
unchanged installation and connection dimensions)

1.Other types of electrical protection on request

2.Only available with DN6: We can only supply "31" in sea water
resistant design "J" !

► Block circuit diagram / connection allocation

