

DWG10 SERIES SOLENOID OPERATED DIRECTIONAL CONTROL VALVES

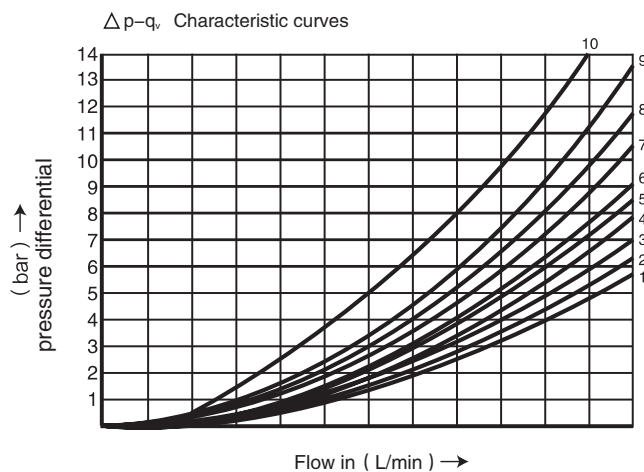


DWG10 series directional control valves are solenoid operated directional spool valves, these valves are used to the start, stop and direct flow.

▶ Technical data

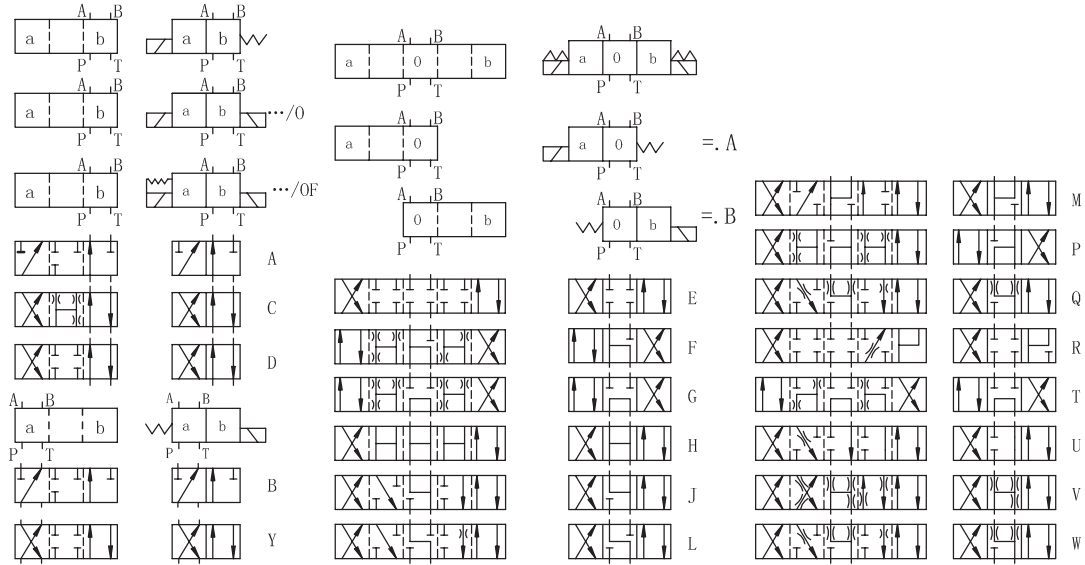
Size	10
Max. flow rate (L/min)	120
Operating pressure (MPa)	A, B, P oil port 31.5
	T oil port 16
Weight (KGS)	4.6
	6
Valve body (Material) Surface treatment	casting phosphating surface
Oil cleanliness	NAS1638 class 9 and ISO4406 class 20/18/15

▶ Characteristic curves (measured with HLP46, $V_{oil}=40^{\circ}\text{C} \pm 5^{\circ}\text{C}$)

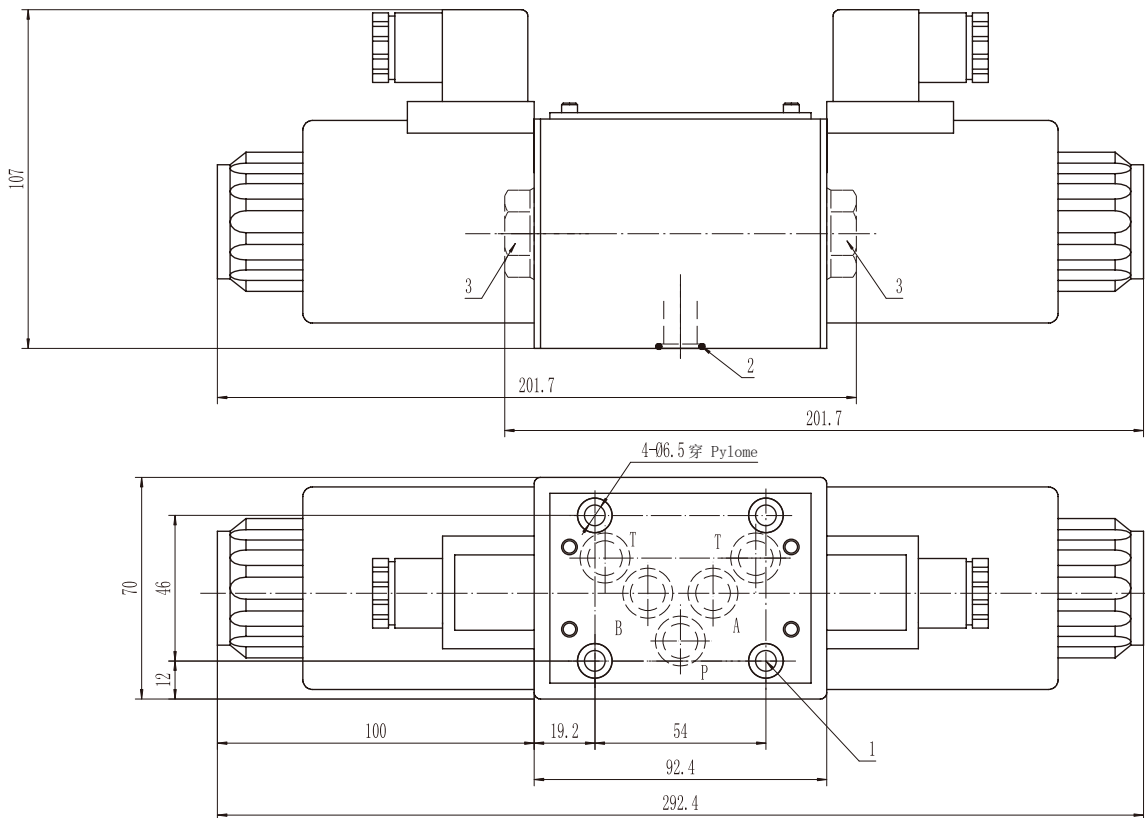


Spool symbol	Flow direction				
	P-A	P-B	A-T	B-T	
A; B	3	3	-	-	
C	3	3	4	5	
D; Y	5	5	6	6	
E	1	1	4	4	
F	2	3	7	4	
G	3	3	6	7	
H	1	1	6	7	
J	1	1	3	3	
L	2	2	3	5	
M	1	1	4	5	
P	4	2	5	7	
Q	1	2	1	3	
R	3	6	4	-	
T	3	3	6	7	
U, V	2	2	3	3	
W	2	2	4	5	
on-position	P-A	B-A	A-T	P-T	
R	-	9	-	-	
	P-A	P-B	B-T	A-T	P-T
F	4	-	-	9	9
9	-	5	8	-	10
G, T	-	-	-	-	9
H	-	-	-	-	3

► Spool symbols

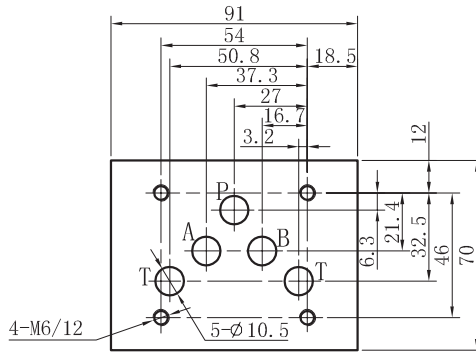


► DWG10 Subplate Installation Dimensions



- 1. Valve' s set screw:
4 of M6 x 40 GB/T70.1-12.9
Tightening torque Ma=15.5Nm.
- 2. O-ring $\phi 16 \times 1.9$
- 3. Plug screw for valves with one solenoid.

DWG10 Subplate Installation Dimensions



Installations are the same with
Z1DS10,Z2SD10,Z2FDS10,ZPB10,
ZPR10

4	DWG	10	E	30	/	*	DC24	Z5L	/	*	*	*
---	-----	----	---	----	---	---	------	-----	---	---	---	---

3=3-way
4=4-way

Size 10

Spool type

Series 30=30 Solenoid coils with
thread connection

No code=With spring return;O=Without spring return
OF=Without spring return with deten

Voltage

DC12;DC24 ;AC110;AC220

For further details

No code=NBR seals
V=FPM seals

No code=Without orifice insert
B0.8=Orifice size0.8mm
B10=Orifice size1.0mm
B12=Orifice size1.2mm

Z5L=Large quadrate plug with light